

# MONTHLY MEMBERSHIP PROGRESS REPORT

LOCATION PENNSYLVANIA

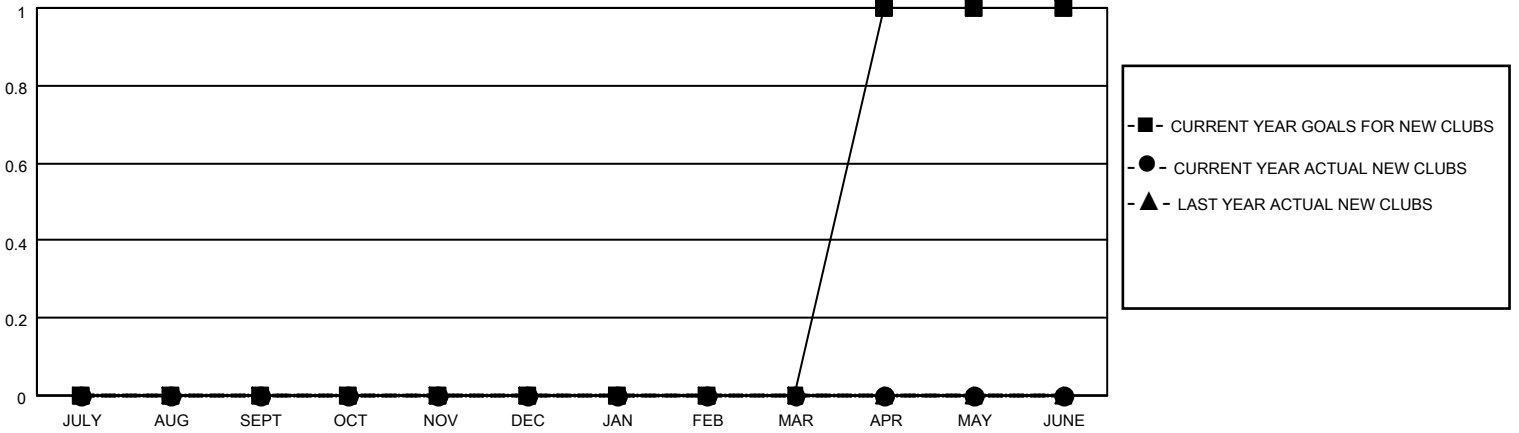
District 14 E

Results as of: 4/30/2023

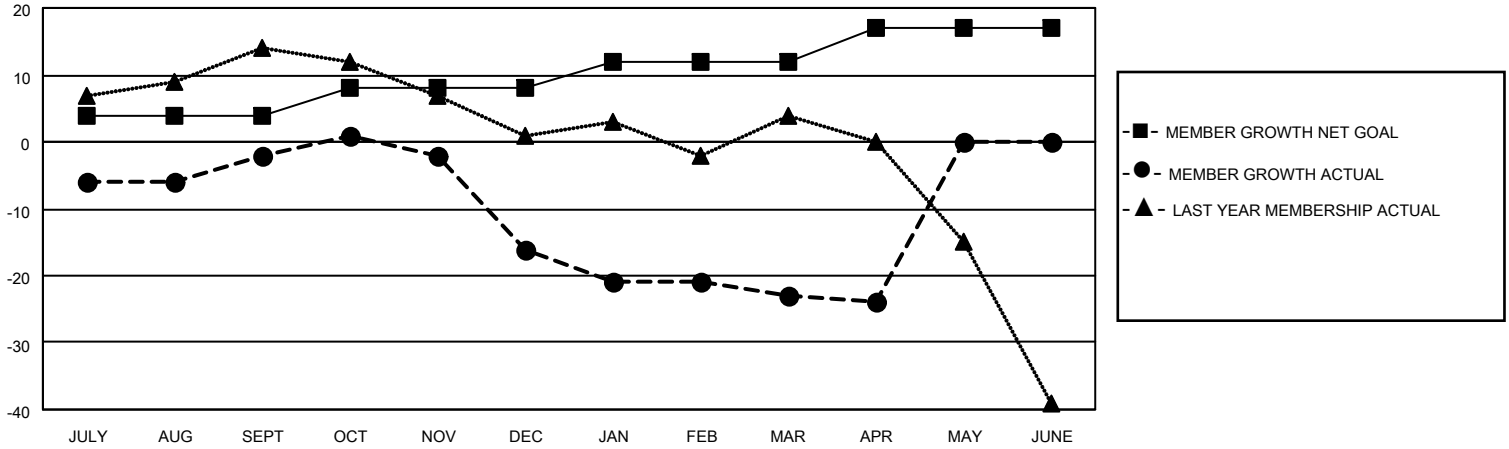
Clubs			
RESULTS FOR 2022-2023			
QUARTER	NEW CLUB GOAL	NEW CLUBS	DROPPED CLUBS
JULY/AUG/SEPT	0	0	1
OCT/NOV/DEC	0	0	0
JAN/FEB/MAR	0	0	0
APR/MAY/JUNE	1	0	0

Members			
RESULTS FOR 2022-2023			
QUARTER	MEMBER GROWTH NET GOAL	MEMBER GROWTH ACTUAL	DROPPED MEMBERS ACTUAL (including transfers)
JULY/AUG/SEPT	4	7	9
OCT/NOV/DEC	4	10	24
JAN/FEB/MAR	4	8	14
APR/MAY/JUNE	5	2	3

**GOALS AND ACTUAL NEW CLUBS CUMULATIVE**



**GOALS AND ACTUAL MEMBERS CUMULATIVE**



**DROPPED CLUBS: 1**

**11 CLUBS OF 33 ADDED 1 OR MORE NEW MEMBERS**

**GENDER DISTRIBUTION**

MALE	514 (70.03%)
FEMALE	219 (29.84%)
NON BINARY	0 (0.00%)
PREFER NOT TO ANSWER	1 (0.14%)

**DROPPED MEMBERS**

DECEASED	8
CLUB CANCELLED	0
OTHER	42
<b>TOTAL</b>	<b>50</b>

[CLICK HERE FOR CUMULATIVE MEMBERSHIP DATA](#)

TOTAL FAMILY UNIT MEMBERS	179
FAMILY MEMBERS PAYING HALF DUES	93